

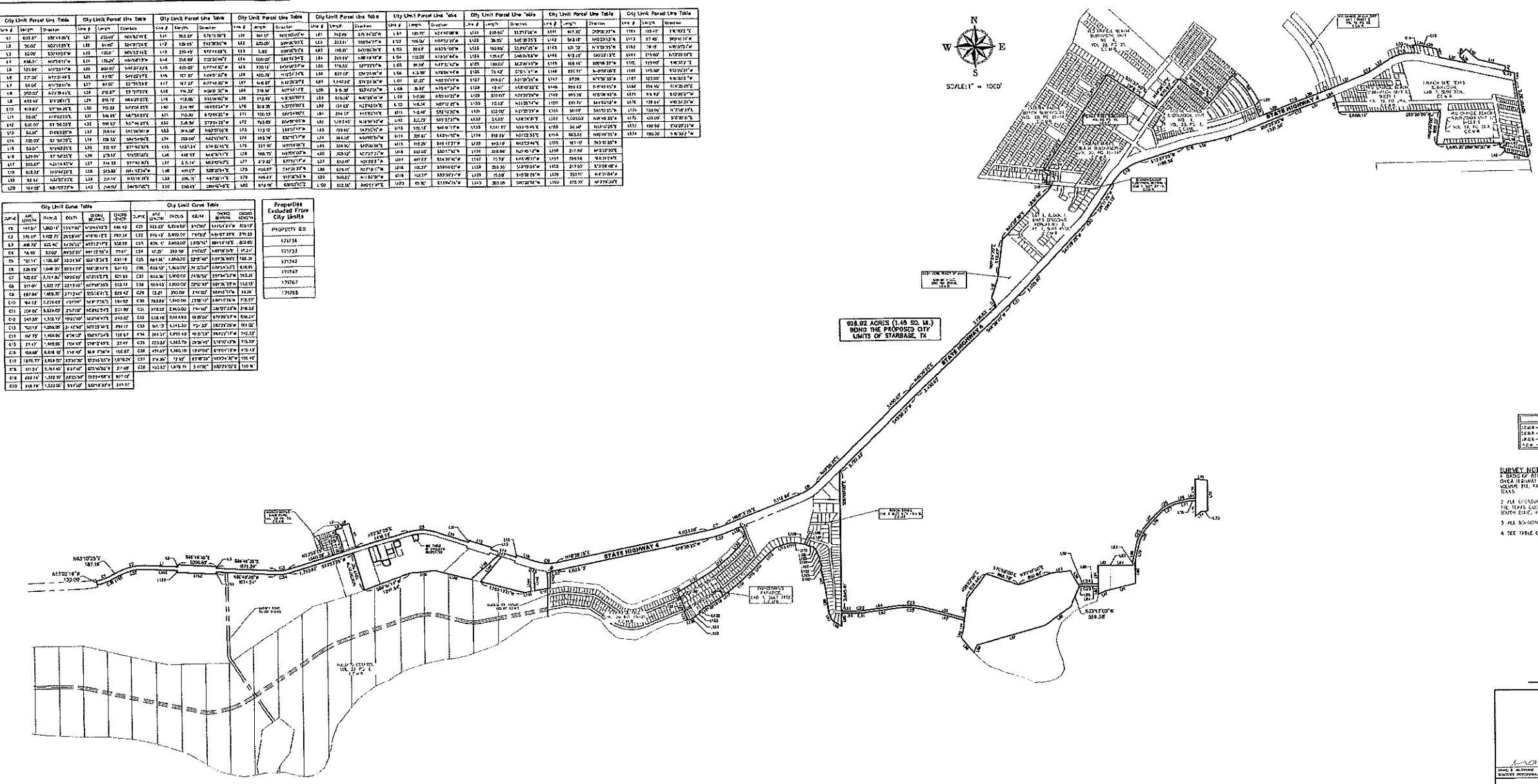
CITY OF STARBASE, TEXAS

INCORPORATION PETITION FOR THE CITY OF STARBASE, TEXAS – A TYPE-C MUNICIPAL CORPORATION

- III. Sealed City of Starbase, Texas, Proposed
Municipal Boundary Map**

City Link Parcel Line Table	City Link Parcel Line Table	City Link Parcel Line Table	City Link Parcel Line Table	City Link Parcel Line Table	City Link Parcel Line Table	City Link Parcel Line Table	City Link Parcel Line Table	City Link Parcel Line Table	City Link Parcel Line Table		
Line #	Length	Direction	Line #	Length	Direction	Line #	Length	Direction	Line #	Length	Direction
11	100.00	N 89° 45' 00" W	12	100.00	N 89° 45' 00" W	13	100.00	N 89° 45' 00" W	14	100.00	N 89° 45' 00" W
15	100.00	N 89° 45' 00" W	16	100.00	N 89° 45' 00" W	17	100.00	N 89° 45' 00" W	18	100.00	N 89° 45' 00" W
19	100.00	N 89° 45' 00" W	20	100.00	N 89° 45' 00" W	21	100.00	N 89° 45' 00" W	22	100.00	N 89° 45' 00" W
23	100.00	N 89° 45' 00" W	24	100.00	N 89° 45' 00" W	25	100.00	N 89° 45' 00" W	26	100.00	N 89° 45' 00" W
27	100.00	N 89° 45' 00" W	28	100.00	N 89° 45' 00" W	29	100.00	N 89° 45' 00" W	30	100.00	N 89° 45' 00" W
31	100.00	N 89° 45' 00" W	32	100.00	N 89° 45' 00" W	33	100.00	N 89° 45' 00" W	34	100.00	N 89° 45' 00" W
35	100.00	N 89° 45' 00" W	36	100.00	N 89° 45' 00" W	37	100.00	N 89° 45' 00" W	38	100.00	N 89° 45' 00" W
39	100.00	N 89° 45' 00" W	40	100.00	N 89° 45' 00" W	41	100.00	N 89° 45' 00" W	42	100.00	N 89° 45' 00" W
43	100.00	N 89° 45' 00" W	44	100.00	N 89° 45' 00" W	45	100.00	N 89° 45' 00" W	46	100.00	N 89° 45' 00" W
47	100.00	N 89° 45' 00" W	48	100.00	N 89° 45' 00" W	49	100.00	N 89° 45' 00" W	50	100.00	N 89° 45' 00" W
51	100.00	N 89° 45' 00" W	52	100.00	N 89° 45' 00" W	53	100.00	N 89° 45' 00" W	54	100.00	N 89° 45' 00" W
55	100.00	N 89° 45' 00" W	56	100.00	N 89° 45' 00" W	57	100.00	N 89° 45' 00" W	58	100.00	N 89° 45' 00" W
59	100.00	N 89° 45' 00" W	60	100.00	N 89° 45' 00" W	61	100.00	N 89° 45' 00" W	62	100.00	N 89° 45' 00" W
63	100.00	N 89° 45' 00" W	64	100.00	N 89° 45' 00" W	65	100.00	N 89° 45' 00" W	66	100.00	N 89° 45' 00" W
67	100.00	N 89° 45' 00" W	68	100.00	N 89° 45' 00" W	69	100.00	N 89° 45' 00" W	70	100.00	N 89° 45' 00" W
71	100.00	N 89° 45' 00" W	72	100.00	N 89° 45' 00" W	73	100.00	N 89° 45' 00" W	74	100.00	N 89° 45' 00" W
75	100.00	N 89° 45' 00" W	76	100.00	N 89° 45' 00" W	77	100.00	N 89° 45' 00" W	78	100.00	N 89° 45' 00" W
79	100.00	N 89° 45' 00" W	80	100.00	N 89° 45' 00" W	81	100.00	N 89° 45' 00" W	82	100.00	N 89° 45' 00" W
83	100.00	N 89° 45' 00" W	84	100.00	N 89° 45' 00" W	85	100.00	N 89° 45' 00" W	86	100.00	N 89° 45' 00" W
87	100.00	N 89° 45' 00" W	88	100.00	N 89° 45' 00" W	89	100.00	N 89° 45' 00" W	90	100.00	N 89° 45' 00" W
91	100.00	N 89° 45' 00" W	92	100.00	N 89° 45' 00" W	93	100.00	N 89° 45' 00" W	94	100.00	N 89° 45' 00" W
95	100.00	N 89° 45' 00" W	96	100.00	N 89° 45' 00" W	97	100.00	N 89° 45' 00" W	98	100.00	N 89° 45' 00" W
99	100.00	N 89° 45' 00" W	100	100.00	N 89° 45' 00" W	101	100.00	N 89° 45' 00" W	102	100.00	N 89° 45' 00" W

City Link Curve Table	City Link Curve Table	Properties Excluded From City Limits
Curve #	Radius	APC - 2000
1	100.00	APC - 2000
2	100.00	APC - 2000
3	100.00	APC - 2000
4	100.00	APC - 2000
5	100.00	APC - 2000
6	100.00	APC - 2000
7	100.00	APC - 2000
8	100.00	APC - 2000
9	100.00	APC - 2000
10	100.00	APC - 2000
11	100.00	APC - 2000
12	100.00	APC - 2000
13	100.00	APC - 2000
14	100.00	APC - 2000
15	100.00	APC - 2000
16	100.00	APC - 2000
17	100.00	APC - 2000
18	100.00	APC - 2000
19	100.00	APC - 2000
20	100.00	APC - 2000
21	100.00	APC - 2000
22	100.00	APC - 2000
23	100.00	APC - 2000
24	100.00	APC - 2000
25	100.00	APC - 2000
26	100.00	APC - 2000
27	100.00	APC - 2000
28	100.00	APC - 2000
29	100.00	APC - 2000
30	100.00	APC - 2000
31	100.00	APC - 2000
32	100.00	APC - 2000
33	100.00	APC - 2000
34	100.00	APC - 2000
35	100.00	APC - 2000
36	100.00	APC - 2000
37	100.00	APC - 2000
38	100.00	APC - 2000
39	100.00	APC - 2000
40	100.00	APC - 2000
41	100.00	APC - 2000
42	100.00	APC - 2000
43	100.00	APC - 2000
44	100.00	APC - 2000
45	100.00	APC - 2000
46	100.00	APC - 2000
47	100.00	APC - 2000
48	100.00	APC - 2000
49	100.00	APC - 2000
50	100.00	APC - 2000
51	100.00	APC - 2000
52	100.00	APC - 2000
53	100.00	APC - 2000
54	100.00	APC - 2000
55	100.00	APC - 2000
56	100.00	APC - 2000
57	100.00	APC - 2000
58	100.00	APC - 2000
59	100.00	APC - 2000
60	100.00	APC - 2000
61	100.00	APC - 2000
62	100.00	APC - 2000
63	100.00	APC - 2000
64	100.00	APC - 2000
65	100.00	APC - 2000
66	100.00	APC - 2000
67	100.00	APC - 2000
68	100.00	APC - 2000
69	100.00	APC - 2000
70	100.00	APC - 2000
71	100.00	APC - 2000
72	100.00	APC - 2000
73	100.00	APC - 2000
74	100.00	APC - 2000
75	100.00	APC - 2000
76	100.00	APC - 2000
77	100.00	APC - 2000
78	100.00	APC - 2000
79	100.00	APC - 2000
80	100.00	APC - 2000
81	100.00	APC - 2000
82	100.00	APC - 2000
83	100.00	APC - 2000
84	100.00	APC - 2000
85	100.00	APC - 2000
86	100.00	APC - 2000
87	100.00	APC - 2000
88	100.00	APC - 2000
89	100.00	APC - 2000
90	100.00	APC - 2000
91	100.00	APC - 2000
92	100.00	APC - 2000
93	100.00	APC - 2000
94	100.00	APC - 2000
95	100.00	APC - 2000
96	100.00	APC - 2000
97	100.00	APC - 2000
98	100.00	APC - 2000
99	100.00	APC - 2000
100	100.00	APC - 2000



LEGEND
 CLEAR - EXEMPT COUNTY MAP RECORDS
 SHAD - LAND OF UNKNOWN RECORDS
 DASH - OFFICE RECORD OF LAMSON COUNTY
 D.C. - DEED BY MAP

SURVEY NOTES:
 1. BEARS OF BEARS THE SOUTH RIGHT OF WAY LINE OF BOCA OVER HIGHWAY 4 AS PER THE DEED THEREIN RECORDED IN LAMSON CO. DEED BOOK 24, DEED RECORD OF LAMSON COUNTY, TEXAS.
 2. ALL COORDINATES, BEARINGS AND DISTANCES ARE BASED ON THE TEXAS GEODESIC SYSTEM (NAD 83) HORIZONAL PLANE, SOUTH ZONE, 83 NORTH Y AXIS, ONLY.
 3. ALL DIMENSIONS ARE BASED ON RECORDED DOCUMENTS.
 4. SEE TABLE OF EXCLUDED PROPERTIES.

OVERALL PROPOSED CITY LIMITS OF STANBACE, TX



SAMES
 800 S. 107th ST., SUITE 1000 TEL: (900) 408-0800
 McALLEN, TEXAS 78901 FAX: (900) 402-0800
 TEL. REG. SURVEYING PERM. NO. 101110-00
 SAMES, INC. 1000 S. 107th ST., SUITE 1000
 McALLEN, TEXAS 78901